

MODERN

**A Solar Writer Report
for David Helfgott**



Written by Stephanie Johnson

Compliments of:-

*Esoteric Technologies Pty Ltd
ACN 003 895 396*

*PO Box 578
Magill SA 5072
Australia*

*Tel/Fax: +61 (08) 8331 3057
Email: admin@esotech.com.au
Web: www.esotech.com.au*

INTRODUCTION



This report has been written to introduce you to the concepts of astrology and how to get started with your natal chart. Astrology is a complex and meaningful science which takes years to study and apply successfully; however, we would like to whet your appetite with this report, and encourage you to deepen your understanding through other means.

Astrology is a study of the connection between planets and life on Earth. It is based on a concept that energy patterns form between other planets and Earth; and that these energies affect our lives as individuals and communities.

An astrological chart, also known as a horoscope, natal chart, or birth chart, records the relationship between the planets and the signs of the Zodiac. Charts can be calculated for the birth of a person, a community, an event or anything that seems momentous. The horoscope is as individual and unique as a fingerprint.

When using these interpretations, please bear in mind that, inevitably, every chart will contain some contradictory influences, and as a result certain interpretations of different items in the same chart may seem difficult to reconcile. However, this may still be an accurate reflection of your chart, as it is likely that you do experience conflicting desires, events and circumstances in your life. Usually it is the responsibility of an astrologer to synthesise these apparent contradictions in order to present a cohesive and meaningful interpretation of the dilemmas of the chart.

Please also be aware of the fact that each person has positive and negative influences in the chart, and therefore in their lives. The challenge is to accept and overcome the negative influences, so that we can successfully focus on the positive traits. This report outlines both influences, and therefore parts may be difficult to accept. Any advice given is meant to be an aid to a person taking responsibility for their own lives. The ultimate decision rests with each individual. The author and publisher accept no liability for any adverse effects of this report.

LIFE GOALS



*If you would hit the mark, you must aim a little above it;
Every arrow that flies feels the attraction of earth.*
Longfellow, *Elegiac Verse* 1880.

The Sun

Just as the Sun is the centre of the Earth's Solar System, so does the Sun play a vital role in your life on earth. Your life goals are linked to your Sun - its zodiac sign and its position in your chart. Contrary to popular belief, the Sun isn't the only planet to be considered in a person's chart, but it is an important component. The Sun gives you an indication of how you can shine in your life. You will feel truly alive when you're living the traits indicated by your Sun. Therefore it's likely that you will spend much of your life on a journey to self discovery, aiming to incorporate these traits into your life. Understanding the energy of your Sun is a good starting point to understanding yourself and your purpose in life.

The Sun is in the 12th House

Your Sun is in the twelfth house of your birth chart meaning that much of your life is spent working behind the scenes, whether this means taking a back seat in your job or working in the relative anonymity of a large institution such as a hospital or the armed services. Although you've the ability to succeed in your life, it is likely to involve some form of self-sacrifice. You've the ability to overcome any difficulties entirely through your own efforts, although you can benefit from other people's charity at great times of need. You seem to be constantly forced into situations where you've to tackle things on your own and may sometimes feel overwhelmed by the forces of the world. Seclusion is a prominent theme of your life, whether it is enforced or by choice. It may be that you actually enjoy long periods on your own, recharging your batteries through moments of quiet reflection. It's also possible that you could have some difficulty spending time on your own, as this forces you to contemplate painful memories, particularly those connected with your father. It's likely that you've missed out on an opportunity to have a close relationship with your father. This separation could have been because your father was forced through circumstances to leave the family home, or perhaps he was unwell, or simply the type of person who lacked the strength to face up to his parental duties. In some cases it's possible that your father could have died when you were a young child, leaving a sense of loss. Although you

healing effect on any emotional pain. You may even discover a sense of being deeply connected with the psychic world.

The Sun is in Taurus

Your Sun is in the zodiac sign of Taurus indicating that you're a reliable and solid individual, with a strong need for stability, routine and security. You approach life in a methodical manner preferring the tried and true pathways of familiar territory. In fact the adventures of unexplored territories fill you with feelings of foreboding and you can be quite stubborn in your refusal to leave your secure surroundings. Much of your energy is spent on making your world secure. For this reason you're appreciated for your reliability and ability to provide a safe haven for others. Your friends and family may not realise how much they have come to rely on your quiet persistence in everyday life and your down-to-earth support and wisdom. Tradition appeals to you, and therefore you're often seen as a stalwart in society, taking on the more conventional roles. Your down-to-earth nature also means that you literally enjoy the fruits of the earth. For instance you've a strong appreciation of the beauties and practical advantages of nature, often pouring your own creative energy into garden scenes or the more practical vegetable garden. You also enjoy the sensation of textures and tastes, often indulging yourself in the comforts and delights of the sensual side of life. While there are obvious advantages to the pleasures of familiar creature comforts, you must also be wary of becoming stuck in your ways stubbornly refusing to move from your stronghold.

The Sun is Conjunct Mercury

The combination of the Sun and the planet Mercury in your chart can vary depending on other influences in your chart. The planet Mercury is considered by astrologers to represent the trickster. Ancient astrologers also measured the beneficial or damaging influences of Mercury in terms of how close this planet was to the Sun's beams. The closer the planet to the Sun the more detrimental. Positively this combination can mean that you're likely to succeed in life through your quick wit and business acumen. You're studious, learning new subjects with ease, and are particularly adept in the scientific and mathematical fields. On the other hand you can be too fond of seeking stimulation, with the cost of failing to complete a task. You're the proverbial "Jack or Jill of all trades, master/mistress of none".

The Sun is Opposite Jupiter

The Sun is making contact with the planet Jupiter in your birth chart indicating that you've the ability to achieve your life goals, but the path isn't always easy. On the positive side you are optimistic and enthusiastic and are likely to encounter good fortune at some stage during your life. It's possible that a father or grandfather figure gives you a helping hand towards achieving your goals. However, you've a tendency to jeopardise your own success through being grandiose in your goals and plans. You've an overly-optimistic and idealistic approach to life, which prevents you from making a realistic appraisal of most situations. You can be restless, needing excitement and adventure, finding it difficult to commit to a course of action or to settle in one place. Depending on other influences in your chart you're the typical ideas person who has difficulty putting in the hard work needed to achieve a finished product. Your challenge is to find a balance between stability and adventure. "Moderation in all things" could be a good motto to remind you to curb your excesses. Once you've learned self-restraint then you're able to reach all of your goals.

Jupiter

The planet Jupiter also tells you about your goals in life, in particular the areas in which you are likely to succeed. Jupiter is the planet of expansion, abundance and wisdom. Ancient astrologers believed that the planet Jupiter had a greatly beneficial effect on a person's life.

Jupiter is in the 6th House

Jupiter is also in the sixth house of your chart signifying that you certainly know how to liven up a dull day, even if it does mean re-scheduling a few commitments and shaking up other people's routines. You like to live each day to the full, ignoring the rigours of "should" and "have to" in favour of comfort and fun. You're full of boundless energy and tend to complete the mundane jobs in a flurry of activity so that the rest of the day can be enjoyed in other ways. Fortunately you're usually healthy and your body is quite resilient, which means you've lots of energy for filling your day with fun-filled projects. You can achieve quite a lot in one day. Work and fun often mean the same thing to you, with you spending much of your time on the job. Mostly this isn't a problem as you enjoy your work and can make a good income, but you need to be careful not to overdo things. It's also possible that your work is linked to your own personal and spiritual beliefs, and these may be associated with caring for other people. You enjoy employment that gives you plenty of freedom to set your own goals, a job that doesn't tie you to a desk but involves some travel.

Jupiter is in Scorpio

You've the planet Jupiter in the zodiac sign of Scorpio in your birth chart indicating that your life seems to reflect the adage that "life is meant to be lived to the full". You tackle most projects with zest making the most of resources that come your way. You're industrious, ambitious and have strong will power. These attributes stand you in good stead for the ups and downs of your life, and there are plenty of these. Life can seem a bit of a battleground at the best of times, and birth and death play key roles in your life. You're proud and don't like to admit how deeply some of your life events have affected you. This is particularly true of the deaths of loved ones, which have set you on an intense search for the truth. This quest can lead to you to delve into the mysteries of life, in particular the occult world. It also brings you into contact with people from unusual walks of life, and some of your friends could be considered quite extraordinary. You form strong bonds with other people, particularly with your spouse, and are privy to private information. It's also possible that you've been entrusted with professional secrets. You're likely to benefit from enterprises undertaken with other people.

HOME



*Perverse and foolish oft I strayed,
But yet in love he sought me,
And on his shoulder gently laid,
And home, rejoicing, brought me.*
Hymn, *The King of love my Shepherd is* 1868.

The Moon

Astrologers from different schools of thought allocate varying meanings to the Moon in a birth chart. Ancient astrologers say that the Moon changes its nature according to its phases, and merely passes on impressions from other planets rather than directly influencing a person's life. However, modern astrologers tell us that the Moon depicts a person's roots, our home and family. They say the Moon also shows our habitual nature or subconscious patterns of behaviour which stand in the way of achieving our life goals. While the Moon can show us our strengths, it can also depict our weaknesses which need to be overcome in order to be successful in life.

The Moon is in the 11th House

The Moon is placed in the eleventh house of your birth chart suggesting that friends and acquaintances are a major feature of your life, influencing you both positively and negatively. On the one hand your friends can be unreliable and changeable failing to live up to your ideals of true friendship. It may be that your friends change within themselves and move on emotionally, or simply that they move out of town and lose contact. Either way you suffer because you feel a sense of loss when separated from your friends. You seek a sense of security from your relationships with other people, only feeling safe when surrounded by warm and loving friends. This is particularly true of your women friends and groups of women, which are likely to feature prominently. Sudden changes in friendships can be disappointing. On a more positive note you can benefit from your large circle of acquaintances who help you emotionally and financially to achieve your own hopes and wishes. You enjoy popularity in groups, particularly when you feel that you feel a sense of belonging. You may find yourself drawn towards humanitarian groups.

The Moon is in Taurus

With the Moon in the sign of Taurus, the creature comforts of life appeal to you,

offering a safe haven in a busy world. At times you may have difficulty rousing yourself to face new challenges, particularly if you're feeling insecure in your life. However, it's only that routine and familiar surroundings feel so safe in an unpredictable world. Fortunately you also enjoy establishing order in your life, and this can rouse you from any temptation to overindulge. In fact you can often be found quietly sorting through files and drawers, weeding the garden bed or some such useful activity. Your down-to-earth nature usually asserts itself when needed. You also enjoy keeping up with traditions - reliable rituals that have been passed down through the generations giving you a sense of life being reliable and predictable. Astrologically speaking the Moon is exalted when in Taurus, emphasising that wonderful ability of yours to establish order.

The Moon is Conjunct Mars

The Moon is making an aspect to Mars in your chart indicating that your home life is active and boisterous, rather than a peaceful environment. Fortunately you're an impulsive and emotional person, who prefers action to becoming bored by inactivity. You're likely to feel more comfortable when faced with a challenge. For this reason you may enjoy working around the house or working from home. It's possible that your need for an active home life stems from your childhood home environment, which was busy and boisterous. Perhaps your mother, or a strong woman in your household, was vivacious and dynamic, possibly even fiery. In some cases male members of the family can display these traits. Either way at a young age you learnt how to enjoy a spirited home life, which you've carried into your adult life. You need to be wary of a lack of sensitivity to other people's feelings. Not everyone is as feisty as you. You could also try to avoid becoming embroiled in arguments with women. This could be difficult as you're impetuous, liable to act without thinking. Mostly you enjoy the challenge of new activity, but at times your vigorous nature can land you in hot water.

The Moon is Square Saturn

Much of your adult life has been spent trying to overcome the difficulties that you faced as a child in your home and family. Astrologically speaking this is because the planet Saturn is contacting the Moon in your birth chart. Ancient astrologers believed that the planet Saturn had a malefic influence in a person's chart. In your case your early home life has been adversely affected. The extent of this effect depends largely on other influences in your chart. In some cases it can mean that your childhood home lacked spontaneity and warmth, but was well-organised and structured in a manner which helped you to feel supported and safe. However, it's more likely that circumstances in your family led to you feeling that home was a cold and unsupportive environment. This could have been one painful incident such as the loss of a family member, or it could have been the result of years of hardship. It's possible that one of your parents, perhaps your mother, was a strict and severe influence, unable to show you the affection that you felt you deserved. As a result it's likely that you're somewhat shy as an adult, lacking in self-confidence and sensitive to criticism. You may be emotionally reserved. Perhaps you have chosen at some stage in your life to live in solitude rather than risk the lack of affection and warmth that you felt as a child. As you grow older and work on your self-esteem you can build a lasting maturity. You develop an inner self-confidence which helps you build firm foundations in your life and achieve your ambitions, as well as loving family relationships. You work solidly to build yourself a secure and firm footing, earning

the respect of those around you. You can succeed in business and in your career, particularly through being noticed by your superiors. You may also benefit through investments in land and property.

The Moon is Square Pluto

The Moon and the planet Pluto are connected in your birth chart indicating that you're an intense and emotional person, prone to extreme highs and lows. You love drama and intensity, because these give you a sense of being deeply connected to your loved ones, and to the world. It's likely that your family and home life are periodically emotionally volcanic. This can be problematic if other members of your family don't desire the same level of intensity, particularly if they're seeking peace and quiet at home. If this is the case your needs are directly opposed to your loved ones', which may not concern you, but could result in dramatic changes in your personal life. This is also a problem because you've a deep sense of commitment to your personal relationships, and feel betrayed if others don't share this commitment. It's likely that your need for emotional intensity originates from an early childhood experience, probably linked with your mother or another strong woman figure. Your relationship with your mother is likely to be immersed with intense feelings, perhaps even stemming from a life-or-death situation. You may feel positively or negatively about your mother. Either way your feelings are likely to be strong. You're a resourceful person, and can rely on your own resources to solve most problems. You need to find a creative outlet for your intense nature, something that will totally absorb your attention. Perhaps you would enjoy property development, or renovating your house. You're a powerful person with leadership skills, and a need for a challenge.

EDUCATION AND COMMUNICATION



*There is no such whetstone, to sharpen a good wit
and encourage a will to learning, as is praise.*
Roger Ascham, *The Schoolmaster* 1570.

Mercury

Our academic schooling and learning through life experience are linked to the planet Mercury. This planet stands for the intellect, common sense, cold reason, commerce and business. It tells us about our communication and learning habits and our modes of thinking.

Mercury is in the 12th House

The planet Mercury in the twelfth house of your chart signifies that you've a lively imagination and love to immerse yourself in a realm of fantasy. This could be your own day-dreaming and reflection or it could be the faerie-realms of a good book. This can be a drawback early in your education, but can be put to good use as you mature. You're fascinated by secrets - other people's secrets and metaphysical secrets. Magic and the occult world is a strong pull in your life. At times you're frightened by the extent to which you like to dabble in the occult, but you're a risk-taker when it comes to secret adventures. It's true that you do have to be careful not to get out of your depth. Otherwise you could find that the boundaries between reality and fantasy become difficult to discern, and you're in danger of becoming mentally unstable. Depending on other influences in your birth chart, it's possible that you could spend some time in a mental institution where you're able to re-address any mental imbalances in your life. However, knowing your propensity to worry about such things, it should be pointed out that this isn't a foregone conclusion. You're more likely to benefit from long periods of rest and seclusion where you can quietly ponder the secret mysteries of life.

Mercury is in Gemini

The planet Mercury in the zodiac sign of Gemini indicates what a chatterbox you are. You do not mean to prattle on and on. It's just that you do so love the art of conversation, exchanging ideas with other people, and catching up on news. You're a fast talker, with a keen interest in most subjects. You enjoy books, letters, magazines, the media, computers and anything else that helps you learn and communicate. You also like to network linking people from different walks of life and giving

information gained from one source to the next. For this reason you often find that you're the common link in a chain of quite different friends. You enjoy education of all forms, but may suffer in early education through an inability to sit still and listen. As you grow older you're likely to excel in your education because of your enquiring mind and intelligence. Astrologically speaking, the planet Mercury is considered to be strong in its rulership sign of Gemini. This means that you can benefit from your many interests. At times you find that your thoughts are scattered, but once you've managed to focus on your subject you can excel, particularly in fields such as teaching, writing, communications, and networking.

Mercury is Sextile Saturn

The planet Mercury is making favourable contact with the planet Saturn in your birth chart indicating that you've good intellectual abilities. Your mind is contemplative and profound, capable of concentration and comprehension. Therefore you're likely to shine in pursuits such as study, writing, publishing, lecturing, teaching, travelling, diplomacy, and business. You may be particularly interested in science, politics or medicine. You're fortunate to have good judgement and reasoning powers, as well as an excellent memory. You may have had difficulty expressing yourself as a child, but as an adult you're able to speak your mind in a logical and methodical manner. The saying "older and wiser" certainly applies in your case. You're a sensible person, able to make careful plans and carry them through to completion. Depending on other aspects in your chart you're more likely to take a traditional path in your education, rather than explore uncharted territory. The steady approach to education and communication suits you. You've the ability to become a voice of authority in your field of expertise, particularly a field which requires business acumen, good communication skills and common sense. In other words, you're capable of achieving whatever you set your mind to.

RELATIONSHIPS



*Let me not to the marriage of true minds
Admit impediments. Love isn't love
Which alters when it alteration finds.
Shakespeare Sonnet 116.*

Venus

The planet Venus tells about love and relationships. It reveals the type of relationship we value, and what we are seeking from our most intimate relationship, as well as how we like to show our love. It answers questions such as, are we attracted to strong, sensual and intense relationships? Or do we prefer some freedom and independence? This planet also depicts how we like to relate to our environment and other people, not just our primary partner, and how much importance we place on money and resources.

Venus is in the 11th House

When the planet Venus is placed in the eleventh house of your birth chart friendships are an important component of your life - a great source of satisfaction and pleasure. A popular person, you enjoy a wide variety of friends from all walks of life, who seem to take up a considerable amount of your time. Your friendships with women may be more prominent than those with men. At times you feel that you owe your success to your friends, and this is probably true. Your friendships are beneficial, contributing to your happiness and helping you achieve your hopes and wishes. This may even involve financial gifts or favours. It's also possible that groups and clubs feature in your life. You enjoy belonging to a group of like-minded people, feeling supported by the relationships that are formed. This could involve you taking a prominent role in a group, or simply working quietly in the background. Either way you're particularly keen on becoming a member of a group with goals that benefit humanity.

Venus is in Aries

With Venus in the sign of Aries you'll pursue a partner ardently and hastily, preferring to be the initiator of the relationship rather than the recipient of someone else's plan of action. Initially you've great enthusiasm for your loved one, and it's important to keep the spark alight throughout the relationship. For you enjoy a challenge in your

chase. You do well with a partner who allows you plenty of freedom, because you value your independence and freedom. If you become involved with someone who likes to be in control and limits your personal freedom your relationship could suffer. On the whole you find it quite easy to detach emotionally from a relationship. It's not that you're heartless or lack commitment. In fact you are quite ardent in your commitment. It's simply that when it comes to relationships you've an independent attitude. This attitude is also reflected in money matters.

Venus is Conjunct The Moon

You enjoy comfortable relationships with other people because of the favourable combination of the Moon and Venus in your birth chart. A charming and prudent person, you enjoy the company of other people, and they respond favourably. You're likely to enjoy success in your primary relationship, choosing someone who feels comfortable and companionable. You're also likely to benefit from your relationships with women.

Venus is Conjunct Mars

The planets Venus and Mars are combining in your chart indicating that you seek a stimulating and romantic relationship. You're charming and assertive, passionate and alive, and admire these qualities in a potential intimate partner. You love to share your adventures with your partner, and it's likely that your relationship will inspire both you and your partner to explore new territory. You need only be wary of holding unrealistically high expectations of your partner, as this can lead to difficulties. This is more likely to be the case when you're young and idealistic. You're liable to disappointment, perhaps even angry feelings, when your partner fails to live up to your expectations. You could also feel angry if rejected in love. Fortunately you've an irrepressible side to your nature, on which you can rely in times of relationship trouble. You're a loyal and fun-loving partner with an ability to balance intimacy with independence.

Venus is Square Saturn

The planets Venus and Saturn have combined in your chart indicating that you have difficulty in intimate relationships. You seek commitment and security in your primary relationship, but may be disappointed at some stage of your life. It's possible for you to have a rewarding, long-term relationship with someone trustworthy and reliable, but it's likely to be after initial setbacks and upsets. You're faithful and loyal, a dependable, stable and dutiful partner. However, you need to be wary of becoming involved with someone who tries to control your movements and behaviour. Depending on other influences in your chart you may be shy and inhibited in your personal relationships, and be fearful of standing up for your rights. One of your parents may have been too strict, eroding your confidence and ability to make your own way in the world. Consequently you fear expressing yourself, particularly in intimate relationships, and harbour feelings of being unattractive. While your personal relationships may prove difficult you've the ability to form good business partnerships. This is probably because business partners don't require intimacy or emotional vulnerability. It's also possible that you're attracted to someone much older. The good news is that once you overcome your feelings of inadequacy you've the ability to form secure and long-lasting personal relationships based on firm foundations. You may favour a traditional marital relationship, complete with a ceremony and wedding vows.

MOTIVATION



Dimidium facti qui coepit habet: sapere aude.
To have begun is half the job: be bold and be sensible.
Horace, *Epistles* 65- 68BC.

Mars

Mars is the planet that tells us about our assertion and drive. It tells us what motivates us and what desires drive us most powerfully. Are we ambitious for professional power, or do we desire a meaningful relationship? Do we pursue our desires aggressively? Or do we sit back, lacking the confidence to achieve our ambitions? These are the types of questions answered by the qualities of the planet Mars in our chart.

Mars is in the 11th House

With Mars placed in the eleventh house of your birth chart groups, organisations and clubs provide an outlet for the passionate side of your nature. On a positive note this means that your leadership qualities come to the fore inspiring group projects. You have the power to rally group members, charging them with purpose and vision. Others admire your prowess. However, it's also likely to come at a cost. You have difficulty curbing your passion and can alienate other people through your lack of restraint. In other words you push too far, not knowing when to stop. You don't recognise the signs of mutiny. If any thing you have difficulty curbing your impatience with the group process, perhaps even losing your temper with individual members. While you achieve your own goals, you lose a lot of friends along the way. This hardly seems right as you believe that you're only trying to help other people, but perhaps you have difficulty seeing your own faults. It's also fair to say that you have very few true friends, which is difficult to understand when you desire to have many. You lose your friends through quarrels, which seem to erupt from nowhere and it doesn't seem possible to heal the rift. However, the few true friends can usually be counted on to fight on your behalf, and you, too, are willing to stand up and fight for them.

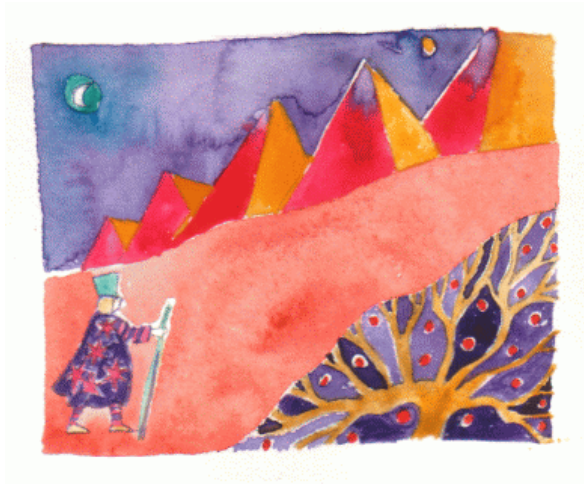
Mars is in Aries

The planet Mars in the sign of Aries indicates that you're an assertive person with an enthusiastic, positive and aggressive approach to life. You like to take the initiative in anything that you tackle, and rarely rely on other people for guidance or motivation. It's more likely that you're motivating and guiding others, inspiring them to follow your lead or to follow their own dreams. You're spontaneous and like to take risks, although sometimes you can be too rash which results in accidents. However, you're irrepressible and soon bounce back from any setbacks. Your self-assurance knows no bounds. You like to be free to pursue your own interests, impatient with others who stand in your way or who may have difficulty in keeping up with your aggressive pace. You're strong-willed and dislike any restrictions and limitations, preferring independence even if it means learning by your own mistakes. Therefore your loved ones and colleagues would do better to give you plenty of freedom, letting you face the challenges on your own, particularly when it comes to your love of sport and adventure. The planet Mars is considered to be in a favourable position in the zodiac sign of Aries and therefore your enterprising nature should generally fare well in life.

Mars is Square Saturn

Conflict is likely to be a key feature of your life because of the influence of the planets Saturn and Mars in your chart. When these combine in an unfavourable manner it leads to troubles and discord. You're probably well aware of the difficulties that you face in some areas of your life, finding it difficult to motivate yourself to overcome them. Other people and circumstances seem to stand in the path of your success, which is frustrating. In some cases you could be frustrated by a physical illness, which prevents you working towards your ambitions. It's true that you shouldn't neglect your physical health, because you could be prone to illness and harm through accidents. You may find that resentment and thoughts of revenge are ways in which you motivate yourself into action. Of course you would do well to avoid acting on these feelings, otherwise you could end up in violent disputes or in trouble with the law. This influence in your chart can indicate achieving notoriety, which is very different from achieving success. It's possible that you've difficulty remembering a time when life didn't have its problems. Perhaps you had a tough life as a child either through difficult family circumstances or because of a strict and harsh parent figure. Of course much of this scenario depends on other influences in your chart. On a more positive note you're confident and ambitious, capable of driving yourself and others to achieve your objectives. You can be motivated by the thought of achievement, and are likely to succeed through hard work and self-discipline. In fact you're determined to succeed in certain areas of your life. Your will power can be indomitable, particularly when you've determined on a course of action.

CAREER AND AMBITIONS



The road up and the road down are one and the same
Heraclitus, *Die Fragmente der Vorsokratiker* c540-480BC.

Saturn

The planet Saturn represents responsibility, boundaries and structure; structure that provides a positive framework within which we can build, or structure that limits our development and forces us to reassess our liabilities and assets. This planet is also linked with our ambitions, and how we approach the practical side of life. This planet often represents the professional side of our lives.

Saturn is in the 2nd House

The planet Saturn placed in the second house of your birth chart suggests that money is a serious business, with your personal finances requiring careful thought and planning. Your ability to earn money is influenced by other aspects in your chart. If you've good influences then you're able to slowly and steadily increase your personal wealth through hard work and prudent investments. However, if you've difficult influences then earning money is likely to be an uphill battle as you struggle to make ends meet, and cause you many moments of worry. Perhaps you work hard, but only seem to earn enough money to pay your bills, with little left over for luxuries. You could suffer monetary losses through loss of employment or unwise investments. Whether your finances gradually improve or continual to be a struggle, you need to plan carefully rather than make hasty decisions. Avoid impulse buying and get-rich-quick schemes. Don't let the lack of money affect your self-esteem, but learn to value other achievements and assets in your life.

Saturn is in Leo

The planet Saturn in the sign of Leo signifies that you take pride in your work, and have an ability to build personal authority. You've a strong will and are determined to succeed in your objectives, even if it means forgoing a few pleasures along the way. In fact you can be passionate about the projects in which you become involved. This positive attitude can benefit your ambitions, although at times you can display too much pride and arrogance and other people start to resent your attitude. This is particularly true if you're placed in a position of authority and let the power go to your head. Those working for you could resent your high-handed approach. The reason for

these difficulties, astrologically speaking, is that the planet Saturn is considered to be in a detrimental position in the sign of Leo. However, on the whole you're generous and can develop the ability to achieve your ambitions through thoughtfulness and by including the ideas and plans of other people. Your strong will-power and determination also help you overcome any obstacles strewn on your path.

Saturn is Conjunct Pluto

The combination of the planets Saturn and Pluto in your chart suggests that you're an ambitious, insightful and powerful person. You're likely to make a powerful impact on your friends, family, colleagues and loved ones, both as a child and an adult. At times you might be surprised by the extent of other people's reactions to your presence and opinions. You may even surprise yourself by your own reactions to some circumstances. Authority is likely to be a continuing source of difficulty in your life, as you attempt to find the right balance between your own individual rights, and those of the community. Of course there are many instances when these two rights coincide, but you're more likely to find yourself involved in the clashes, perhaps as a mediator. It's possible that you could become involved in someone's power struggles, in which your role may or may not be central to the outcome. It's true that you've the ability to be a powerful leader, perhaps in the government or armed forces, or as an executive or politician. You can be a powerful leader, but first you must learn to use your unique insights for positive purposes. The 19th Century author John Stuart Mill said in his work *On Liberty* (1859) that: "Everyone who desires power, desires it most over those who are nearest to him, with whom his life is passed, with whom he has most concerns in common, and in whom any independence of his authority is oftenest likely to interfere with his individual preferences". Herein lies a key to your chart. You've the ability to succeed in your ambitions, but first you must learn how to deal with the balance of power in your life, respecting both your own and other people's rights to succeed.

Saturn is Square Mars

An unfavourable combination of the planets Saturn and Mars can indicate difficulties in your profession, particularly in partnerships or companies. You need to be careful to avoid litigation, which you're like to lose. Of course this depends largely on other influences in your chart. Nevertheless you need to act with the utmost integrity within your career to ensure success rather than scandal.

The Midheaven

The Midheaven is one of the important angles in a birth chart and is also known by astrologers as the MC or Medium Coeli. This angle tells us of our public life, our profession and social status. In other words how we are viewed by the public, how we want to be viewed by the public and what type of profession we are likely to choose. It's also important to note the house position of the ruling planet of your Midheaven for further information about your career as this can greatly influence the interpretation.

The Midheaven is in Pisces

With a Midheaven in the sign of Pisces and ruled by the planet Neptune, you'll serve humanity through your career. You may suffer setbacks in your career, or suffer from feelings of inadequacy, but it's likely that you're highly talented in an artistic, healing, musical or spiritual field. You could discover your talents at an early stage in life,

becoming a child prodigy on the road to a long and successful career. However, it's also likely that earlier in life, you're unsure about what career direction to follow, possibly feeling overwhelmed by career choices. It's not until later that you become surer of your preferred profession. Perhaps you're forced by circumstances to make sacrifices in your early professional life. If this is the case then you need to reflect carefully on your chosen path once your obligations are complete, and you're free to pursue your career. Depending on other influences in your birth chart you could be attracted to a career in music, the arts, medicine, psychology, and counselling. Examples of famous people with the same Midheaven include Australian pianist David Helfgott, Australian musician and composer Barry McKimm, USA director, producer and writer Stephen Spielberg, and USA singer Patsy Cline.

CREATIVITY AND ORIGINALITY



The artist must be in his work as God is in creation, invisible and all-powerful; one must sense him everywhere but never see him.
Gustav Flaubert, *Correspondence* 1857-64.

Uranus

The planet Uranus represents originality and unconventionality. This can be both the unusual and brilliant genius or the wilful rebel without a cause. This planet tells us the areas in which we break with convention, become innovative and experiment with new and exciting ways. In some circles of astrology Uranus represents the creative genius which comes directly via our soul or higher self.

Uranus is in the 1st House

The planet Uranus is in the first house of your birth chart suggesting that you're one of a kind - a real individual, who stands out in a crowd. And this is the way that you like it. The tried and true paths through life don't interest you. An original thinker, perhaps even a genius in your field, you're eager to embrace new ideas and projects. You're excited by innovative and challenging ideas and projects. It's definitely a case of "out with the old and in with the new". Rules are meant to be broken and traditions are meant to be defied as far as you're concerned. You like to take risks, and can be a bit of a dare-devil. In fact if anyone tries to curb your freedom, you're willing to fight for your rights to be independent. It's possible that others will turn to you for leadership, wanting you to fight for their rights as well. For this reason you could be at the forefront of humanitarian or political causes. It's also possible that metaphysical, scientific and occult discoveries fascinate your intelligent and intuitive mind. Your appearance is likely to reflect your original personality, resulting in some original and innovated fashion statements. Although you may appear odd at times to other people, your original approach to life is likely to overcome their concerns.

Uranus is in Gemini

The planet Uranus was in the sign of Gemini from 1942 - 1949. It's important to note that Uranus spends a long time in each sign, and therefore the interpretation applies to a generation rather than the individual. For a more individual interpretation you need to look at the house position of Uranus in your chart. Uranus in the sign of Gemini indicates that you belong to a generation which becomes focused on new forms of

communication and the world's networks. This generation is responsible for original and inventive ideas which change the world's communication network. Your creativity soars when you're tackling these issues.

Neptune

Neptune is the planet of creativity and spirituality. It represents both the bliss of spiritual attainment and the heights of creativity. This isn't personal spirituality and creativity which comes at the expense of others, but gifts which can benefit humanity. This planet also represents the confusion that can accompany the road to discovering when we are being selfish, as opposed to when we are generously thinking of how our gifts can benefit others.

Neptune is in the 4th House

The meaning of the planet Neptune placed in the fourth house of your chart varies depending on the other influences in your chart. It usually means that there are plenty of skeletons in the family closet, which family members are keen to see remain behind closed doors. Perhaps other family members are well aware of the skeletons, and it's only you who refuses to face the reality, preferring to build a fantasy picture of your childhood home and family. It's possible that there were several changes of residence in your childhood, or perhaps one major move which affected you deeply. It's also possible that a grandmother had an important influence on your early childhood and family life. There is likely to be a sense of loss associated with your family home, or with your parents. As an adult you may repeatedly attempt to recreate a home that will reflect the ideal held in your mind, or in search of the security which was absent as a child. This can lead to frustration. On the other hand you may be well aware of the peculiarities of your childhood home or family, recalling a sense of loss or disillusion. With this placement you're likely to benefit from the healing effects of living near water, or in wide open spaces. You may also enjoy living in a large apartment block, revelling in the anonymity.

Neptune is in Libra

The planet Neptune was in the sign of Libra from 1942 - 1957. It's important to note that Neptune takes about 164 years to make a complete cycle, spending about thirteen years in each sign, and therefore the interpretation applies to a generation rather than the individual. For a more individual interpretation you need to look at the house position of Neptune in your chart. Neptune in the sign of Libra indicates that you belong to a generation possessing the ability to view human relationships from a more spiritual overall viewpoint, rather than the rules and regulations of the previous (Virgo) generation. It's during this time that some confusion over right human relations may reign. People of this generation will aim to achieve a balance in human relationships. You'll also be concerned with justice.

CHALLENGES IN LIFE



The spirit of self-help is the root of all genuine growth in the individual.
Samuel Smiles, *Self-Help* 1859.

Pluto

The planet Pluto challenges us to transform our lives by clearing out our old habits to make way for the new, more rewarding ways of living. The process isn't necessarily an easy one, as most of us cling tenaciously to the comfort offered by habitual patterns, and are rather scared of new paths. Pluto shows us in which areas of our lives we need to grow, and to a certain extent whether we're likely to find the process of growing painful or joyful.

Pluto is in the 2nd House

The planet Pluto is in your second house of your birth chart indicating that possessions and money are a major challenge in your life. There is a constant sense of upheaval in your finances. This could mean that you're constantly struggling to make enough money to cover your expenses. If this is the case you may adapt your attitude towards money, realising that there are more important values in life. It's also possible that your financial situation undergoes a dramatic turnaround at some stage in your life. You could be very wealthy at one stage, and yet suffer poverty at another. Perhaps you believe that someone has betrayed you, and you've suffered financially as a result. Your challenge is to organise your personal finances with the utmost integrity, otherwise you could be subject to financial investigations and loss.

Pluto is in Leo

The planet Pluto was in the sign of Leo from 1939 - 1957. It's important to note that Pluto takes about 248 years to make a complete cycle, spending 12 - 32 years in each sign, and therefore the interpretation applies to a generation rather than the individual. For a more individual interpretation you need to look at the house position of Pluto in your chart. Pluto in the sign of Leo suggests that you belong to a generation of people concerned with the lack of or acquiring of power. People of this generation have the ability to use power both positively and negatively. World power and leadership are also important issues for these people.

PURPOSE AND JOY



*He who binds to himself a joy
Doth the winged life destroy
But he who kisses the joy as it flies
Lives in Eternity's sunrise
William Blake, MS Note-book.*

A sense of purpose can help us overcome the most onerous difficulties in our lives, by taking the focus away from our failings and problems, and shining the light on our strengths and talents. By concentrating on our purpose we can distract ourselves from our troubles, and maintain the forward momentum of our lives. A sense of purpose can also lead to feelings of happiness and joy. Ancient astrologers believed that a person could either identify with their human body and human life, or could focus on a spiritual life. A rewarding spiritual life can help ease human pain and suffering, and inject joy into every day life. A sense of purpose can assist the process of transferring our identification from our human selves to the spiritual sides of our nature, and one of the greatest gifts of astrology is to help us determine our purpose.

The North Node

The North Node and South Node form an axis in astrology, which is said to represent one's destiny or spiritual quest in life. This axis is also linked with our purpose. The North Node points to a key lesson in our lives. It represents new experiences towards which we must aim during this life. We have already learnt the skills of its opposite point, the South Node, in the past. Now we must grow and stretch ourselves through the North Node.

The North Node is in the 1st House

Your North Node is in the first house and your South Node is in the seventh house of your birth chart indicating a quest for identity. You need to leave behind habits of becoming overly dependent on other people in order to become more independent. You're destined to discover the balance between self-assertion and giving to others.

The North Node is in Gemini

Your nodal axis has the North Node in Gemini and the South Node in the sign of Sagittarius denoting that you're destined to learn to see life from other people's point

of view and to become adept in the art of communication. You've a tendency to be restless and scatty. You need to develop focus and the ability to communicate your ideas in a way that helps the many people in your life.

The North Node is Conjunct The Sun

The North Node and the Sun are combining in your chart to suggest that you need to overcome any inhibitions which stand in the way of you achieving your purpose. You'll feel most joyful when you're fully expressing yourself. It's possible that events will force you to come to terms with your identity in order that you learn to express your fullest potential.

The North Node is Conjunct Mercury

The North Node and the planet Mercury are combining to indicate that you're being urged to develop your communication skills. Your destiny in this life may be linked to some form of teaching or communication, with individuals or groups.

The North Node is Sextile Saturn

You're being challenged, through the combination of the North Node and the planet Saturn, to take a responsible role in groups. You may prefer your own company, but you need to work steadily with others in order to achieve your goals. You may experience periods of isolation, perhaps through physical illnesses, but these force you to reassess your life so that you can fully appreciate your responsibilities.

The North Node is Trine Neptune

You're on a spiritual quest, and your destiny is linked with expressing your artistic and creative talents. This is indicated by the association of the North Node and the planet Neptune. Your challenge is to discover your highest potential, which may be expressed through spiritual or artistic groups.

The South Node is Trine Saturn

The combination of the South Node and Saturn is a difficult one, indicating that you face restrictions in your current life and struggle to express yourself. At times you may feel that the world is a hard place, particularly the demands of daily life. It's possible that you've inherited some emotional or physical problems from your father, or his side of the family, which restrict your ability to achieve your goals. These problems can be overcome, but it's only through hard work and shouldering your responsibilities that you're likely to achieve your purpose.

The Ascendant

The Ascendant, or Rising Sign as it's sometimes called, is a key to discovering our purpose. Ancient astrologers believed that the Ascendant depicted our primary motivation as individuals. Some believed that it was one of the links to discovering what makes a person happy. When we're accomplishing our primary motivation then we're happy. The more modern Esoteric astrologers believe that this sensitive chart point reveals our soul's purpose. When we're carrying out our soul's purpose then we're joyful. They believe that acceptance of our purpose, or fate, can help us achieve success and satisfaction, and that meditation on the qualities of the Ascendant can help us focus on our life's purpose.

The Ascendant is in Gemini

The sign of Gemini is considered to be "masculine" by Ancient astrologers suggesting that you're more likely to actively seek your purpose in life, taking the initiative rather than waiting until circumstances are comfortable. Gemini is also a Mutable sign denoting versatility, flexibility, adaptability, sensitivity, restlessness, indecision and anxiety.

You're clever, cunning, intuitive and restless. Enjoying life at a fast pace you certainly live up to the mutable side of the sign of Gemini. You delight in taking a flexible and adaptable approach to life, preferring to keep all of your options open rather than committing to one course of action. Your primary motivation is stimulation, because you hate to be bored. For this reason you're rarely settled in one place for long. You enjoy exchanging ideas with other people, whether it be through the spoken or written word. Your inability to concentrate, combined with your hectic pace of life, can sometimes get in your way in pursuing your true purpose. You've so many ideas and projects that you can't be relied on to complete anything. This is more likely to concern other people than you because of your ambivalence. Sooner or later you're forced to listen to the advice of those around you, telling you to select a course of action. Or perhaps your curiosity leads you to find a satisfying intellectual pursuit. It's likely you'll excel in educational pursuits, such as academic studies. Communication is vital, and you soon develop a strong desire for knowledge and expression to help you overcome the dualities in your life.

In Esoteric astrology the sign of Gemini is linked with bridging duality. In other words your purpose is linked creating links between two forces whether this is simply the ability to mediate between two opposing parties, or the ability to educate others about the links between heaven and earth. Your purpose is connected with recognising and working with the differences between material and spiritual values.

CONCLUSION

The text in this report has been written by Australian astrologer Stephanie Johnson. Stephanie holds a Bachelor of Arts (Journalism) and was a journalist in Australia, England and the USA for 15 years before becoming a professional astrologer. She is currently a Company Director of Esoteric Technologies Pty Ltd in Adelaide, Australia. She holds the Federation of Australian Astrologers (FAA) Practitioners' Certificate and was awarded an FAA Diploma for her work on the Solar Fire suite of products, in conjunction with Graham Dawson. Her background is in Medieval and Esoteric Astrology.

Stephanie's background in medieval astrology can be detected in the direct style of the report. Medieval astrologers differed from modern-day astrologers in several ways. They didn't have a psychological approach to chart interpretation, but took a much more literal approach. They were very much concerned with the fortunes of an individual, whether a person would survive or not, and whether or not the person would experience good or failing fortunes. The author's particular area of interest in Esoteric astrology can be mainly detected in the section labelled "Purpose and Joy". In Esoteric astrology the purpose of an individual is linked to the soul. In other words it is believed that our souls determine our sense of purpose in the world, motivating us to put our gifts to good purpose.

The illustrations have been created by artist, illustrator and teacher, Janet Bridgland. Janet has held a number of exhibitions in art galleries in the city of Adelaide, Australia, as well as having a permanent exhibition of selected works in the boutique book shop, Back Pages Books, in the Adelaide Hills which she runs with her husband. Janet has illustrated a number of books for the publishing company, Calypso. She teaches illustration at the Douglas Mawson Institute of TAFE, as well as individual art classes for children and adults.

This report is meant more of an introduction to the wonders of astrology rather than a complete course in its intricacies. Further studies, or a consultation with a professional astrologer, are encouraged to explore this most ancient scientific and philosophic tool.

For more information, please write to me at:

stars@soulhealing.com

To order this report, please visit:

<http://www.solarfiregold.com/solarwriter.htm>

and please feel free to explore my 150+ free lessons in astrology at:

<http://www.learnastrologyfree.com>